



HERIO NOVA



## | HERIO NOVA



## HERIO NOVA

The perfect combination  
between light and space

We have made our brightest series even more powerful, making more homogeneous and diffused the light into the large industrial machines. HERIO NOVA includes 4 versions 27W, 42W, 68W and 96W, whose aluminium structure is designed to resist to extreme working conditions. The lighting flow is generated by combining high-efficiency mini Power LED circuits and a prismatic cone diffuser. Side and rear fastening available, for total lamp adjustability.

- LED lighting suitable for use inside medium and large industrial machines
- Anodized aluminium structure with aluminium side caps for a light, anti-corrosion and vibration-resistant structure
- IP67 degree of protection and NBR gasket that fully protect the lamp against dust and shavings
- Power LED with 60.000 hours of average life, which eliminates maintenance costs and guarantees a 50% energy saving
- 5000K monochrome light to recreate an environment with natural, effective lighting
- 120° diffused beam for uniform lighting free from photobiological hazards in accordance with EN 62471:2009
- Direct 24Vdc connection without external components
- M12 connector for fast, safe connection
- 4 versions available
- Rear and side fastening available





01\_Aluminium side caps with NBR gaskets  
02\_Connection with an M12 connector

## Diffuse light, glare free.

### STRUCTURE AND LIGHT FLOW.

Our experience in the lighting field allows us to constantly improve the quality of our lamps, with particular attention to resistance and stability. The aluminium structure of HERIO NOVA with IP67 degree of protection resists to shocks and vibrations and the side caps with NBR gaskets ensure total protection against dust and shavings. It is suitable to use in harsh environment and it resists up to 55°, thanks to its superior quality materials.

HERIO NOVA series main feature is the powerful beam which is generated by combining high-efficiency mini Power LED circuits and a prismatic cone diffuser optimised by numerical algorithms. This system enhances its anti-glare effect but still maintains a constant

light flow at 120° for diffused, uniform illumination inside the structure. The light source has a 60.00 average lifespan, ensuring an energy saving of 50% compared with traditional lighting devices. The light color 5000K allows to create an environment with natural, effective lighting.

The lamp is equipped with I.D.S. technology for direct connection to 24Vdc without external components. Moreover it is supplied with M12 connector and it is protected against reverse polarity in order to prevent circuit damages if wrong connection occurs.



Easy, modular,  
adjustable.

**MODULARITY AND FASTENINGS.**

HERIO NOVA series includes 4 versions and therefore can be installed both in medium and in large industrial machines. It is modular and can be customized according to customer's requirements.

We designed the fastening accessories to allow a wide adjustment of the light flow. You can fasten the lamp laterally for a rotation angle up to 45° with side mounting plates in chromed stainless steel.

The lamp can also be fasten on the rear side thanks to a fastening kit with an articulated joint for a flexible direction of the light beam.

01\_Rear fastening kit

02\_Stainless steel side fastening up to 45° adjustment



# HERIO NOVA

## Technical datasheet

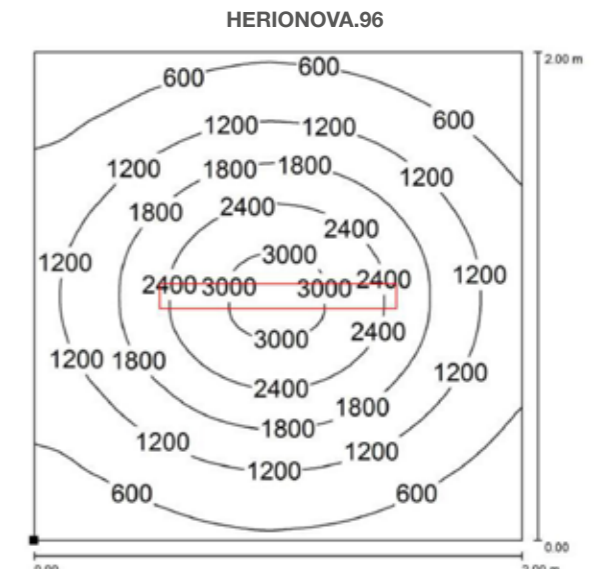
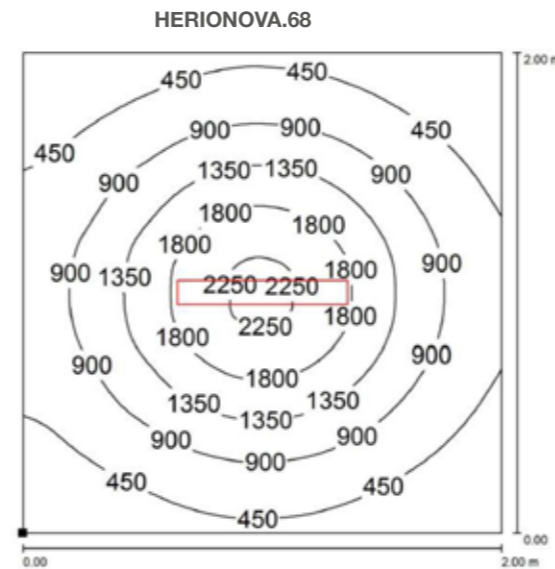
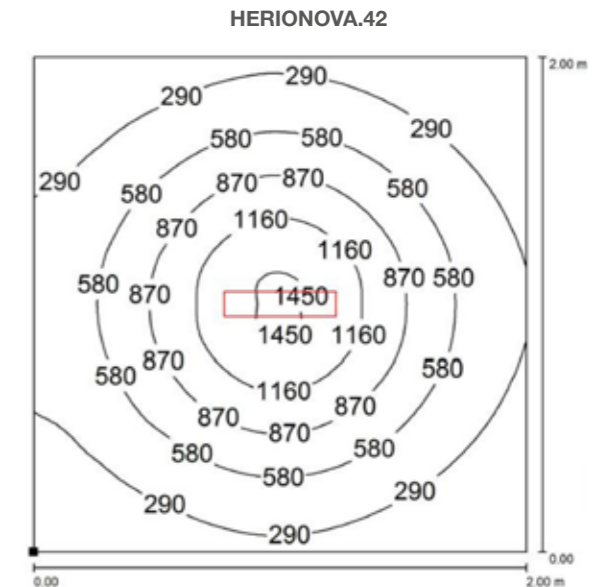
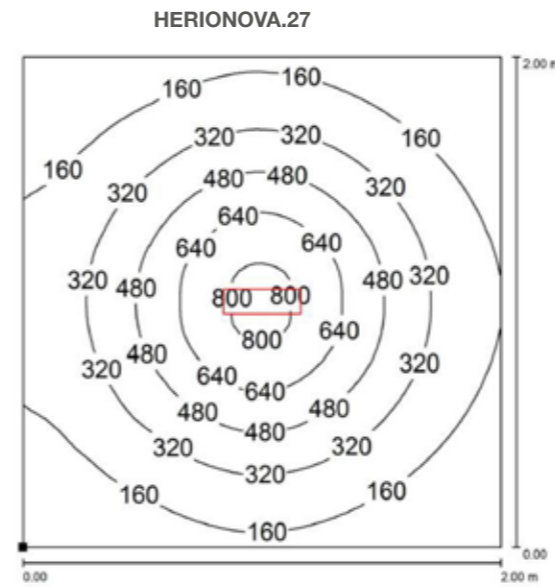


- Direct 24Vdc connection without additional components
- Resistant to dust and shavings
- 4 versions available
- M12 connector
- 2 fastenings available



	L
HERIONOVA.27.50	329
HERIONOVA.42.50	458
HERIONOVA.68.50	716
HERIONOVA.96.50	974

### LUMINANCE DIAGRAMS



### TECHNICAL FEATURES

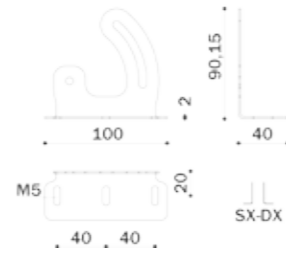
	HERIONOVA.27	HERIONOVA.42	HERIONOVA.68	HERIONOVA.96
<b>Power supply</b>	24Vdc	24Vdc	24Vdc	24Vdc
<b>Power</b>	27W	42W	68W	96W
<b>Current</b>	1,2 A	1,8 A	2,9 A	4,0 A
<b>Degree of protection</b>	IP67	IP67	IP67	IP67
<b>LED type</b>	mini Power LED	mini Power LED	mini Power LED	mini Power LED
<b>LED lifespan</b>	50.000 hours	50.000 hours	50.000 hours	50.000 hours
<b>Lumen LED</b>	2800 lum - 120°	4200 lum - 120°	7000 lum - 120°	9800 lum - 120°
<b>Light color</b>	5000K -CRI75	5000K -CRI75	5000K -CRI75	5000K -CRI75
<b>Structure</b>	anodized aluminium	anodized aluminium	anodized aluminium	anodized aluminium
<b>Glass</b>	tempered 4mm	tempered 4mm	tempered 4mm	tempered 4mm
<b>Diffuser</b>	PMMA prismatic diffuser	PMMA prismatic diffuser	PMMA prismatic diffuser	PMMA prismatic diffuser
<b>Connection</b>	M12 connector	M12 connector	M12 connector	M12 connector

### ORDER CODES

HERIONOVA.27.50	27W - 24Vdc
HERIONOVA.42.50	42W - 24Vdc

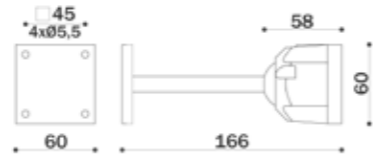
HERIONOVA.68.50	68W - 24Vdc
HERIONOVA.96.50	96W - 24Vdc

## FASTENINGS



Mounting brackets for side fastening

Cod.HERIONOVA.FX01



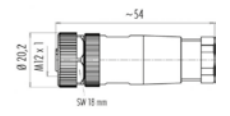
Rear fastening for HERIO NOVA

Cod.HERIONOVA.FX02

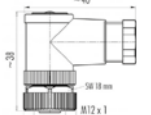
## M12-A 4 PIN CONNECTOR FEMALE IP67



Code	Current	Conductors	Fastenings	Ø Cable
N11810001040302	4 Ampere	Max 0,75mmq	Screws	6-8mm



Code	Current	Conductors	Fastenings	Ø Cable
N11910001040302	4 Ampere	Max 0,75mmq	Screws	6-8mm



## M12-A 4 PIN CONNECTOR FEMALE IP67 WITH CABLE



Code	Current	Cable	Length
M12V.F.3C1,5	4 A	3x0,75mmq - Ø est 7 mm	1,5 m
M12V.F.3C3	4 A	3x0,75mmq - Ø est 7 mm	3 m
M12V.F.3C5	4 A	3x0,75mmq - Ø est 7 mm	5 m
M12V.F.3C10	4 A	3x0,75mmq - Ø est 7 mm	10 m



Code	Current	Cable	Length
M12V.FL.3C1,5	4 A	3x0,75mmq - Ø est 7 mm	1,5 m
M12V.FL.3C3	4 A	3x0,75mmq - Ø est 7 mm	3 m
M12V.FL.3C5	4 A	3x0,75mmq - Ø est 7 mm	5 m
M12V.FL.3C10	4 A	3x0,75mmq - Ø est 7 mm	10 m





**C.C.E.A. srl**

Via Piave, 2  
36077 - Altavilla Vicentina (VI) - Italy

Tel. +39 0444 572083  
Fax +39 0444 572337

[ccea@ccealights.com](mailto:ccea@ccealights.com)  
[www.ccealights.com](http://www.ccealights.com)