

P496



P996

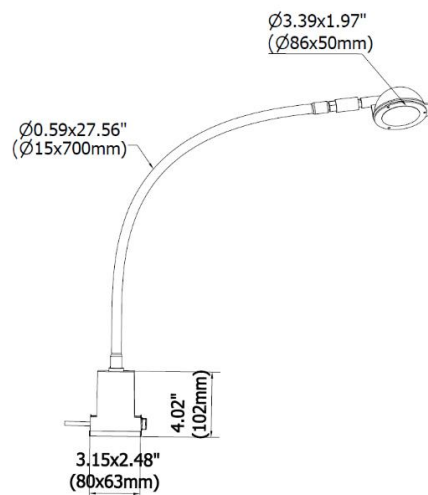


P996 is the ultimate reliable and resistant professional sewing machine LED light.

Thanks to its state-of-the-art multichip LED, it gives natural light to the working area while preserving realistic colors. Its light has a natural shade so that it's comfortable for the operator even after long hours of work. Its gooseneck is completely flexible while resisting to vibrations so it's perfect for all the complex sewing machine works.

- ABS and aluminum head
- High efficiency LED technology - no maintenance required
- Multichip LED for high performance and high color rendering
- 5000K light color
- 230 VAC power supply (internal driver LED)

## DIMENSIONS



MECHANICAL FEATURES

Model	960122SF3	960122SF4
Casing material	Aluminum and ABS spot , plastic base, flexible steel stem covered by sheath	
Side Caps	ABS	
Surface Treatment	RAL 7035	Black
Front glass	Transparent polycarbonate	
Weight	~ 2.65 lb 1,20 kg	~ 2.65 lb 1,20 kg
Protection Index	IP30	
Operating Temperature	-20 °C / + 45 °C	
Installation	Screw, CLAMP03, B01	

ELECTRICAL FEATURES

Model	960122SF3	960122SF4
Power input	4,5 W (@500mA)	4,5 W (@500mA)
Power supply	110 ÷ 240 Vac - 50/60 Hz	110 ÷ 240 Vac - 50/60 Hz
Electrical connection	PVC cable 2x 0,75mmq L.2 m with EUROPLUG	
Insulation Class	Class II	
Efficiency Class	A/A+/A++/A+++ (Integrated LED module) compliant with UE Law No. 874/2012	

CONNECTION 110-240 Vac

PVC 2x 0,75 mm<sup>2</sup> L= 6.56 ft. (2 m) with Europlug

Conductor

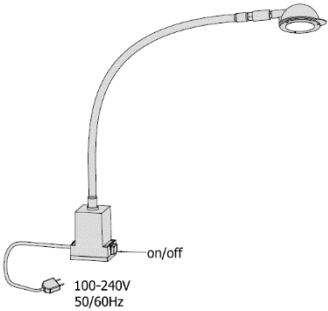
Connection

Brown

L - 230 V

Blue

N - 230V



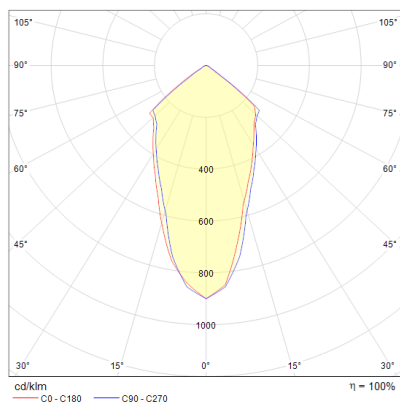
OPTICAL FEATURES

Model	N° and Type of LEDs	LED Lifespan	Light Color	CRI	Light Beam Angle	Luminous Flux	Efficiency
960122SF3	1 Multichip LED	60 000 h L70 **	5000 K	80	120°	~ 500 lm	~ 111 lm/W
960122SF4	1 Multichip LED	60 000 h L70 **	5000 K	80	120°	~ 500 lm	~ 111 lm/W

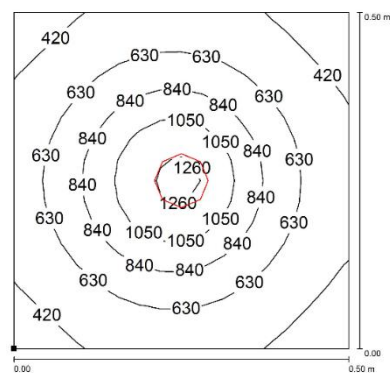
\*\* Flow beam reduced by less than 30% after 60,000 hours

## PHOTOMETRIC DIAGRAMS

120° Optics



960122SF3 / 960122SF4



Altezza installazione: 0,5m

## MOUNTING OPTIONS

Product pictures

Description

Code



Robust, versatile vibration-resistant metal clamp made of stainless steel. Quick assembly on workbenches, sewing machines etc.

CLAMP03



The strong neodymium magnetic base with high adhesion is the perfect solution for all applications requiring both high adhesion and frequent changes in light position.

B01

## ORDER CODES

Model	Description
<b>960122SF3</b>	P996, 27.56"(700mm), 120°, 4.5W, 230Vac, Cable 6.5ft(2m) Europlug, blue ring, RAL7035
<b>960122SF4</b>	P996, 27.56"(700mm), 120°, 4.5W, 230Vac, Cable 6.5ft(2m) Europlug, blue ring, BLACK
<b>CLAMP03</b>	Metal clamp for 2,36x2,36"(80x63mm) base
<b>B01</b>	Magnetic base with screw 3.15x2.48 inc.(80x63mm)