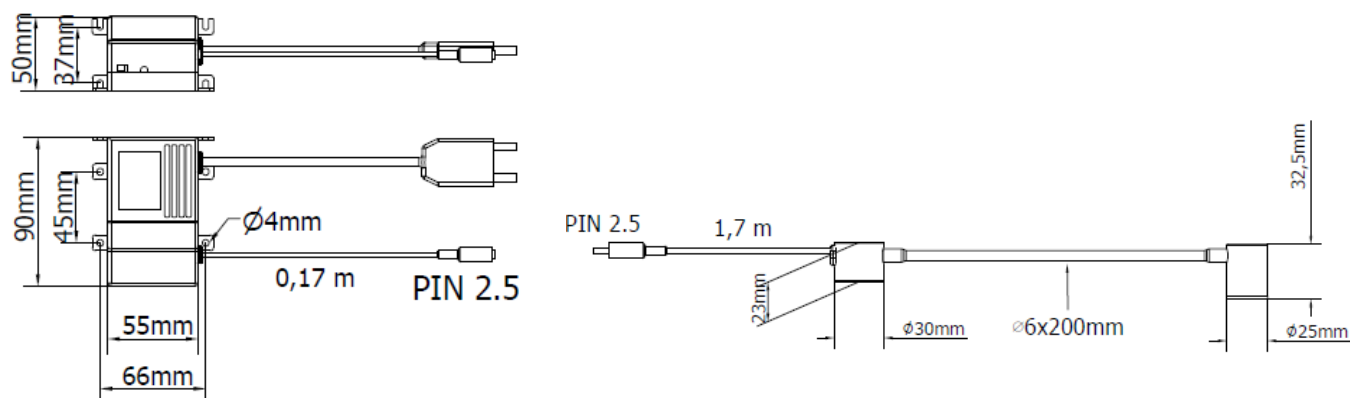




LED lighting KIT made up of LED module with flex stem, magnetic base and stabilized current LED driver.

- High efficiency LED technology – free maintenance
- 5000 K light color
- 230 VAC power supply with external LED driver
- Magnetic base for fixing

DIMENSIONS



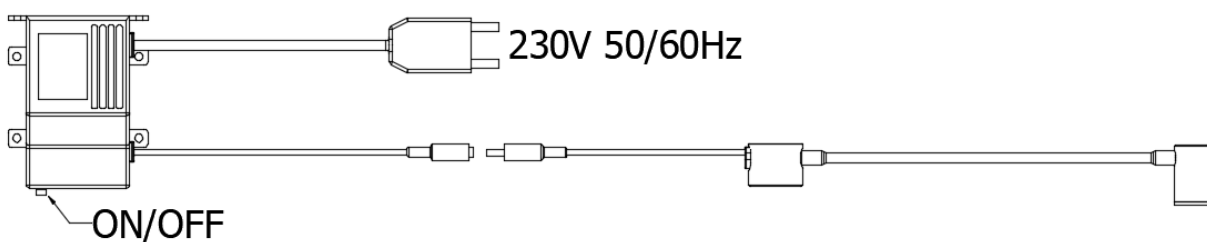
A11LED3W FEATURES (DRIVER)

Power usage	3 W
Power supply	230 Vac
Light source	-
Electrical connection	Europlug + 2.5 mm DC power socket
Housing	ABS
Protection index	IP40
Front protection	-
Operating temperature	-20°C to + 45°C (-04°F to +113°F)
Weight	0,40 kg (0,82 lb)
Agency approval	CE, RoHS
Mounting	Screws

L41LED FEATURES (LED)

Power usage	2 W
Power supply	3.8 Vdc
Light source	LED
Electrical connection	2.5 mm DC power plug
Housing	Anodized aluminum
Protection index	IP40
Front protection	PMMA Lens
Operating temperature	-20°C to + 45°C (-04°F to +113°F)
Weight	0,15 kg (0,31 lb)
Agency approval	CE, RoHS
Mounting	Magnetic base

230 VAC ELECTRICAL CONNECTION WITH LED DRIVER

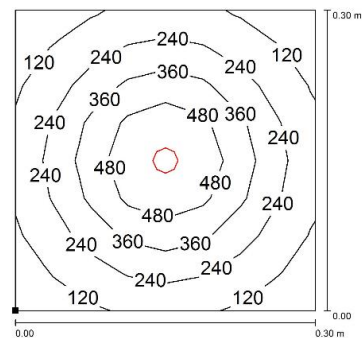
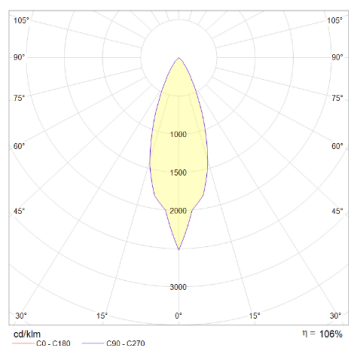


OPTICAL FEATURES

Model	N° and type of LED	LED Lifespan	Light color	CRI	Light Beam Angle	Luminous flux	Efficiency
L41LED	1 Power LED	60 000 h L70 **	5000 K	80	40 °	~ 120 lm	~ 60 lm/W

**Flow beam reduced by less than 30% after 60,000 hours

PHOTOMETRIC DIAGRAMS



Distance graphic: 0,3 m

ORDER CODES

Model	Description
L41LED	1 LED, FLEX, 2W, 3.8 Vdc, 500 mA max, 5000K, 1.7 m cable, plug-pin 2.5
A11LED3W	LED driver, 3W, 230V, Cable 6.5ft.(2m) europlug
K41LED2W	KIT 1 LED, FLEX, 2W, 230VAC 2 m