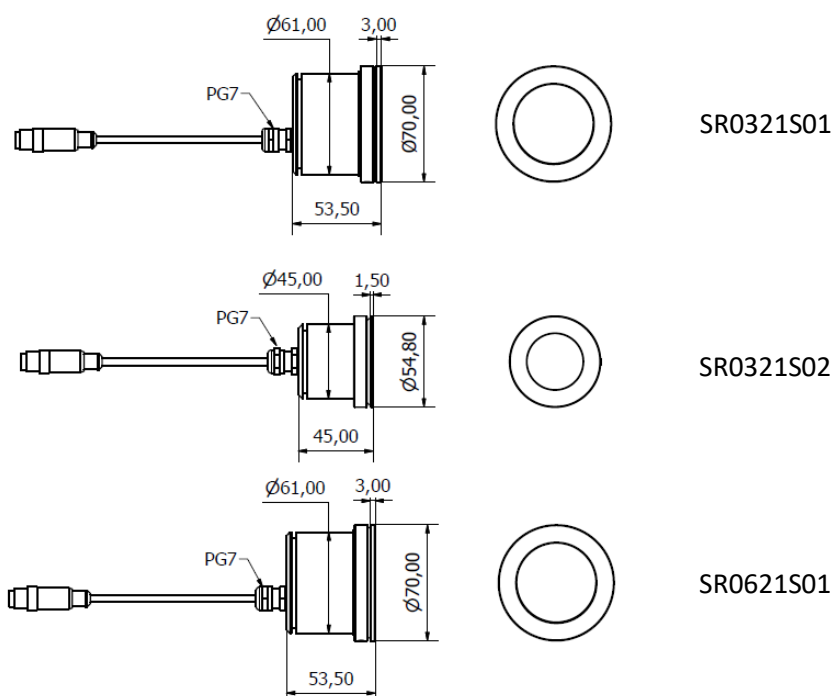




From the study of industrial machines comes the Tool P series, panel lamps with a very high degree of protection IP68. Built-in structure with self-locking fixing system with threaded ring nut. Available in three diameters to satisfy the most varied needs. Light beam of 40 ° amplitude dedicated concentration lenses.

- Structure made entirely of anodized aluminum
- Maintenance-free thanks to high efficiency LED technology
- Light source 3 or 6 power LED
- Light color 5,000 K
- 24 Vdc power supply via M12-A 3P connector
- Optic 40° concentration lens
- External plug-in power supply available for 100 - 240 Vac power supply

DIMENSIONS



MECHANICAL FEATURES

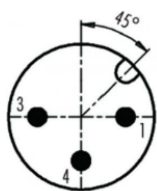
Model	SR0321S01	SR0321S02	SR0621S01
Casing Material	Anodized aluminum		
Side Caps	Anodized aluminum		
Surface Treatment	Standard: 10 microns of black aluminum solution oxidation		
Front Glass	0.16 in (4 mm). thick, extra clear tempered glass		
Weight (excluding accessories)	~ 0.99 lb 0,45 kg	~ 0.44 lb 0,20 kg	~ 0.99 lb 0,45 kg
Protection Index	IP68		
Impact Resistance	1.00 N m/s	1.00 N m/s	1.00 N m/s
Operating Temperature	-20 °C / + 45 °C		
Installation	Threaded ring nut M63 x1	Threaded ring nut M47 x 1	Threaded ring nut M63 x1

ELECTRICAL FEATURES

Model	SR0321S01	SR0321S02	SR0621S01
Power Input	6 W (@500mA)	6 W (@500mA)	12 W (@500mA)
Power Supply	24 Vdc		
Current	0,25 A	0,25 A	0,40 A
Device Power Protection	Protection against reverse polarity		
Electrical Connection	M12 A Coding 3P with cable L. 9.84 ft (3 m)		
Insulation Class	Class III (SELV)		
Efficiency Class	A/A+/A++/A+++ (Integrated LED module) compliant with UE Law No. 874/2012		

ELECTRICAL CONNECTION

PUR 2x 0.34 mm² L= 3 m



Pin

Connection

1

+ 24 Vdc

3

0 Vdc

4

Not connected

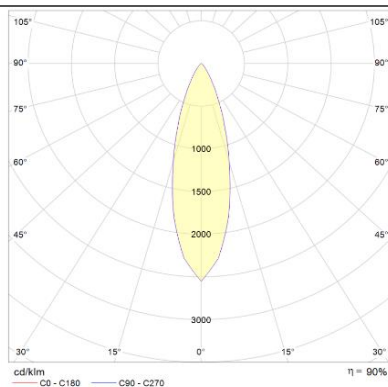
OPTICAL FEATURES

Model	N° and Type of LEDs	LED Lifespan	Light Color	CRI	Light Beam Angle	Luminous Flux	Efficiency
SR0321S01	3 Power LED	60 000 h L70 **	5,000 K	80	40° Optics	~ 400 lm	~ 67 lm/W
SR0321S02	3 Power LED	60 000 h L70 **	5,000 K	80	40° Optics	~ 400 lm DIM	~ 67 lm/W
SR0621S01	6 Power LED	60 000 h L70 **	5,000 K	80	40° Optics	~ 630 lm	~ 53 lm/W

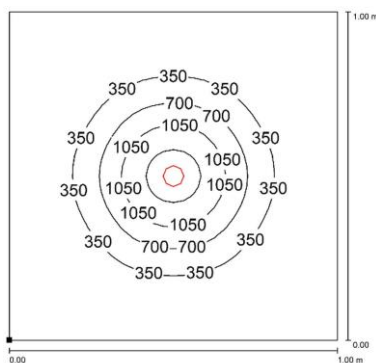
** Flow beam reduced by less than 30% after 60,000 hours

PHOTOMETRIC DIAGRAMS

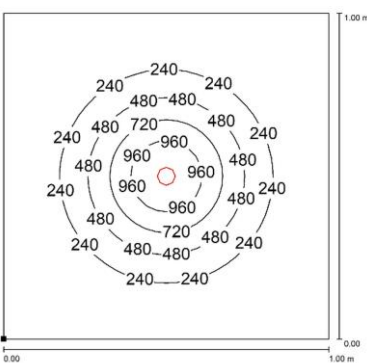
40° Optics



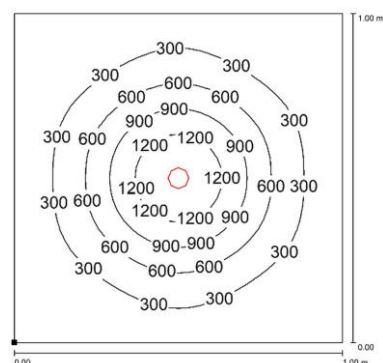
SR0321S01



SR0321S02



SR0621S01



Distance graphic: 1m

EXTERNAL AC/DC CONVERTER 100 – 240 Vac

Product picture

Description

Code product



AC/DC 100-240Vac/24Vdc 18W

SR23018W

ORDER CODES

Model	Description
SR0321S01	P3, Ø2.48"(63mm), 40°, 6W, 24Vdc, Cable 10ft(3m) with M12-A 3P Male
SR0321S02	P35, Ø1.85"(47mm), 40°, 6W, 24Vdc, Cable 10ft(3m) with M12-A 3P Male
SR0621S01	P6, Ø2.48"(63mm), 40°, 12W, 24Vdc, Cable 10ft(3m) with M12-A 3P Male