



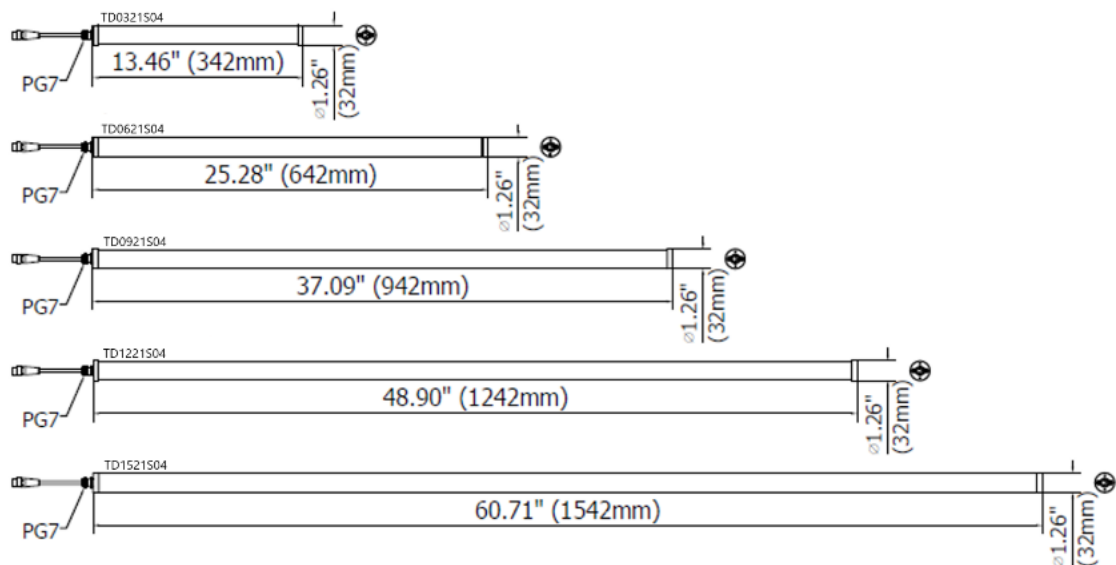
TEIDE POWER S machine light has been designed to be installed in the most diverse work environments, combining its extremely compact size, excellent resistance to liquids and simplicity of installation.

Available in lengths from 342 to 1542 mm, TEIDE POWER S carries an aluminum profile structure inside a PMMA (acrylic) tubular casing. An opal polycarbonate diffuser allows you to obtain an exceptionally homogeneous luminous flux.

The latest generation LED diodes guarantee a very long useful lifespan, while the connection is made easier and safe by its cable with M12 connector.

- Internal Structure made of anodized aluminum
- 1.18 inch (30 mm) wide
- External Cover transparent PMMA
- 5 power sizes from 10 to 50W to meet any work-area criteria
- 120° Light beam to provide wide and intense illumination
- LED lifespan: 60,000 hours constantly > (L 70)
- 24Vdc via M12-connector
- Light color temperature 5000 K -- CRI 80

DIMENSIONS



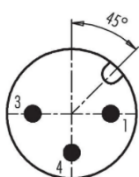
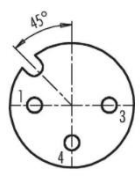
MECHANICAL FEATURES

Model	TD0321S04	TD0621S04	TD0921S04	TD1221S04	TD1521S04
Casing Material	Anodized extruded aluminum				
Side Enclosers	Stainless steel AISI 304				
Surface Treatment	Standard: 10 microns of natural aluminum solution oxidation				
Front Glass	PMMA Transparent Acrylic	PMMA Transparent Acrylic	PMMA Transparent Acrylic	PMMA Transparent Acrylic	PMMA Transparent Acrylic
Weight	0.97 lb (0.45kg)	1.47 lb (0.70kg)	1.97 lb (0.90kg)	2.48 lb (1.15kg)	2.93 lb (1.35kg)
Protection Index	IP67	IP67	IP67	IP67	IP67
Impact Resistance	1.00 N m/s				
Operating Temperature	04°F (-20°C) to +113°F (+ 45°C)				
Installation	TDFX01 / B05				

ELECTRICAL FEATURES

Model	TD0321S04	TD0621S04	TD0921S04	TD1221S04	TD1521S04
Power Input	10 W	20 W	30 W	40 W	50 W
Power Supply	22-26 Vdc				
Current	0,45 A	0,90 A	1,35 A	1,8 A	2,25 A
Electrical Connection	M12 CONN				
Insulation Class	Class III (SELV)				
Efficiency Class	E (Integrated LED module) compliant with UE LAW No. 2019/2020				

CONNECTION* with M12-3P Male A Coding

Male	Female	Pin	Connection
		1	+24 Vdc
		3	0 Vdc
		4	NOT CONNECTED

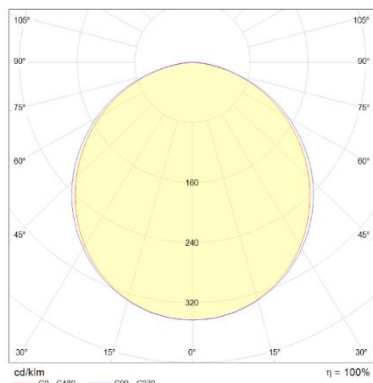
OPTICAL FEATURES

Model	N° and Type of LEDs	LED Lifespan	Light Color	CRI	Light Beam Angle	Luminous Flux	Efficiency
TD0321S04	21 Mid Power LED	60 000 h L70 **	5000 K	80	120°	650 lm	65 lm/W
TD0621S04	42 Mid Power LED	60 000 h L70 **	5000 K	80	120°	1300 lm	65 lm/W
TD0921S04	63 Mid Power LED	60 000 h L70 **	5000 K	80	120°	1950 lm	65 lm/W
TD1221S04	84 Mid Power LED	60 000 h L70 **	5000 K	80	120°	2600 lm	65 lm/W
TD1521S04	105 Mid Power LED	60 000 h L70 **	5000 K	80	120°	3250 lm	65 lm/W

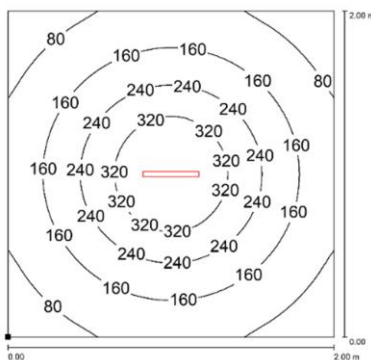
** Flow beam reduced by less than 30% after 60,000 hours

PHOTOMETRIC DIAGRAMS

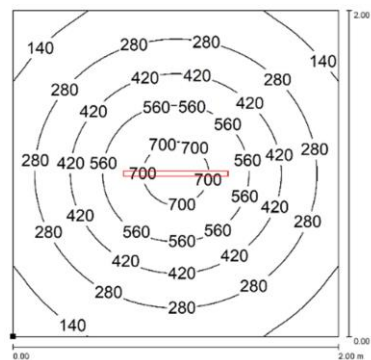
TDX21S04 Flow beam



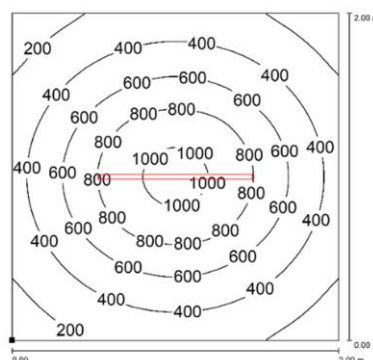
TD0321S04



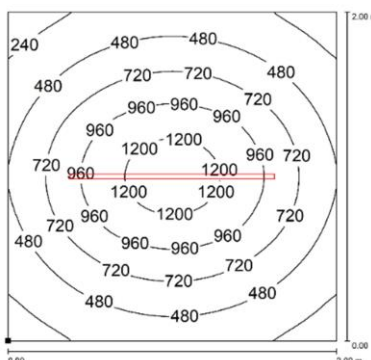
TD0621S04



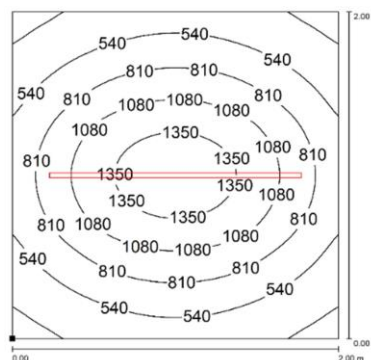
TD0921S04



TD1221S04



TD1521S04



Distance graphic: 1m

MOUNTING OPTIONS

Product pictures

Description

Code product



Robust, versatile and vibration resistant, it is a 70° angle adjustment bracket. Made of stainless steel, it is the perfect solution when you need to adjust the direction of the flow beam in high-vibrating applications.
Product code-set is composed by two brackets with M3 screws and steel handle washers.

TDFX01



Strong magnetic disc made of neodymium and high grip. Use along with TDFX01 brackets when you need to move the light frequently and to different positions. Suitable to use in high-vibrating applications.

B05

ORDER CODES

Model	Description
TD0321S04	TEIDE Power S, 13.46"(342mm), Ø1.26"(32mm), 120°, 10W, 24vdc, Cable 10ft(3m) with M12-A 3P Male, PMMA. Tube and Opal
TD0621S04	TEIDE Power S, 25.28"(642mm), Ø1.26"(32mm), 120°, 20W, 24vdc, Cable 10ft(3m) with M12-A 3P Male, PMMA. Tube and Opal
TD0921S04	TEIDE Power S, 37.08"(942mm), Ø1.26"(32mm), 120°, 30W, 24vdc, Cable 10ft(3m) with M12-A 3P Male, PMMA. Tube and Opal
TD1221S04	TEIDE Power S, 48.90"(1242mm), Ø1.26"(32mm), 120°, 40W, 24vdc, Cable 10ft(3m) with M12-A 3P Male, PMMA. Tube and Opal
TD1521S04	TEIDE Power S, 60.71"(1542mm), Ø1.26"(32mm), 120°, 50W, 24vdc, Cable 10ft(3m) with M12-A 3P Male, PMMA. Tube and Opal
TDFX01	TEIDE POWER, kit made of 2 side metal plates
B05	MAGNETIC BASE WITH SCREW M5 Ø30X9mm