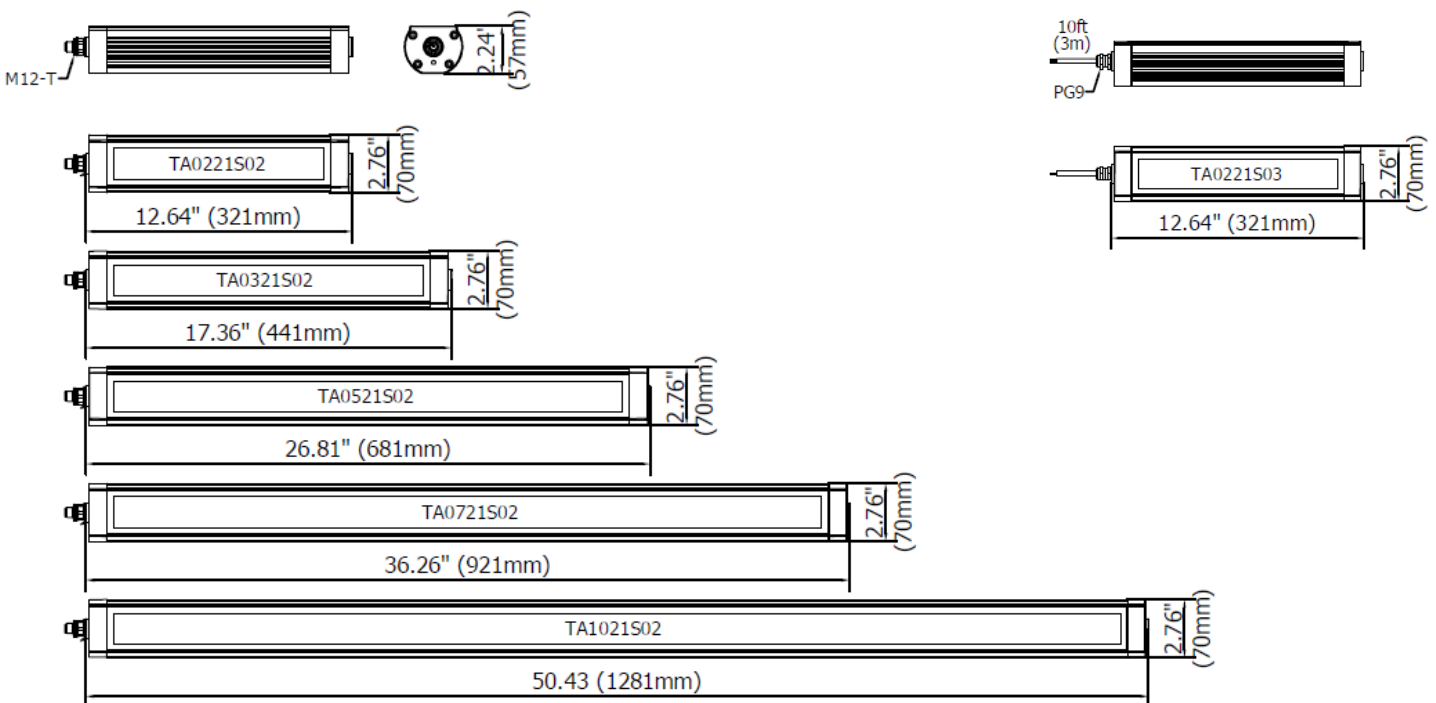




Lighting system for industrial applications, automation, medium and large CNC machines. A Sturdy anodized aluminum casing combined with front tempered glass creates a body impenetrable by coolants, emulsions and shavings. Suitable for wet location it's vibration resistant.

- Casing entirely made of aluminum alloy resistant to Emulsion, coolants, oil.
- Hardened frosted glass resistant to chips and providing uniform illumination
- 5 power sizes from 13 to 65W to meet any work-area criteria
- 120° Light beam to provide wide and intense illumination
- LED lifespan: 60,000 hours constantly > (L 70)
- Light color temperature 5000 K -- CRI 80
- 24 Vdc via M12 or 10ft. (3m) Cable for more flexibility
- 3 mounting options for a quick and practical installation TAFX02 side steel Brackets, TACLIP rear clamping, B03 magnet
- Approval: cURus in compliance with UL2018 / CSA / CE

DIMENSIONS




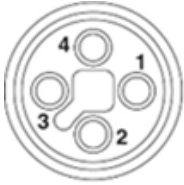
MECHANICAL FEATURES

Model	TA0221S02	TA0221S03	TA0321S02	TA0321S03	TA0521S02	TA0521S03	TA0721S02	TA0721S03	TA1021S02	TA1021S03
Casing Material	Anodized extruded aluminum									
Side Enclosers	Painted aluminum									
Surface Treatment	Standard: 10 microns of natural aluminum solution oxidation									
Front Glass	Extra clear tempered 0.20 in (5 mm) thick frosted glass IK06									
Weight	2.65 lb (1.20kg)	3.09 lb (1.4kg)	3.64 lb (1.65kg)	4.08 lb (1.85kg)	5.62 lb (2.55kg)	6.06 lb (2.75kg)	7.28 lb (3.30kg)	7.72 lb (3.50kg)	10.25 lb (4.65 kg)	10.70 lb (4.85kg)
Protection Index	IP67 Compatible with NEMA Type 12									
Impact Resistance	1.00 N m/s		1.00 N m/s		1.00 N m/s		1.00 N m/s		1.00 N m/s	
Operating Temperature	04°F (-20°C) to +113°F (+ 45°C)									
Installation	TAFX02 Stainless-steel side brackets / TACLIP Aluminum rear Clip / Magnet B03									

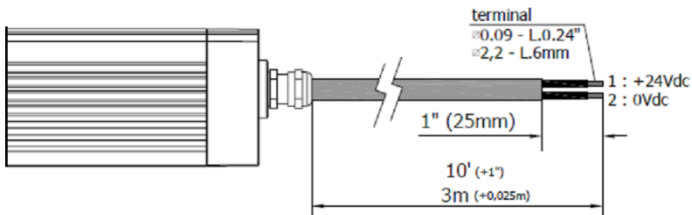
ELECTRICAL FEATURES

Model	TA0221S02	TA0221S03	TA0321S02	TA0321S03	TA0521S02	TA0521S03	TA0721S02	TA0721S03	TA1021S02	TA1021S03
Power Input	13 W		19.5 W		32.5 W		45.5 W		65 W	
Power Supply	22-28 Vdc									
Current	0.56 A @ 24 Vdc		0.85 A @ 24 Vdc		1.35 A @ 24 Vdc		1.9 A @ 24 Vdc		2.7 A @ 24 Vdc	
Device Power Protection	Full protection against reverse polarity									
Electrical Connection	M12	Cable	M12	Cable	M12	Cable	M12	Cable	M12	Cable
Insulation Class	Class III (SELV)									
Efficiency Class	A/A+/A++/A+++ (Integrated LED module) compliant with UE Law No. 874/2012									

CONNECTION* with M12-4P Male T Coding

Male	Female	Pin	Connection
		1	+24 Vdc
		2	Not Connected
		3	0 Vdc
		4	Not Connected

CONNECTION with 10 ft. (3m) Cable, Standard length

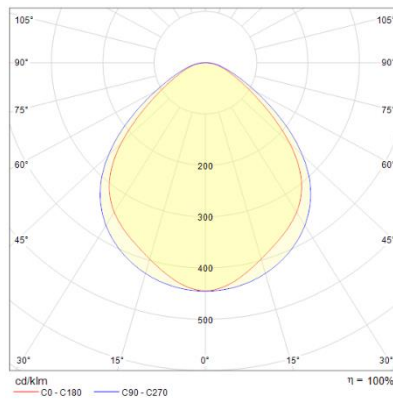
PVC 2x 0.17 in ² (0.75 mm ²) L= 10 ft. (3 m)	Conductor	Connection
	1 Black	+24 Vdc
	2 Black	0

OPTICAL FEATURES

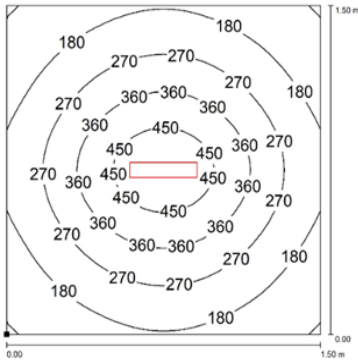
Model	N° and Type of LEDs	LED Lifespan	Light Color	CRI	Light Beam Angle	Luminous Flux	Efficiency
TA0221S02	42 Mid Power LED	60.000 L70**	5000 K	80	120°	1300 lm	100 lm/W
TA0221S03	42 Mid Power LED	60.000 L70**	5000 K	80	120°	1300 lm	100 lm/W
TA0321S02	63 Mid Power LED	60.000 L70**	5000 K	80	120°	1950 lm	100 lm/W
TA0321S03	63 Mid Power LED	60.000 L70**	5000 K	80	120°	1950 lm	100 lm/W
TA0521S02	105 Mid Power LED	60.000 L70**	5000 K	80	120°	3250 lm	100 lm/W
TA0521S03	105 Mid Power LED	60.000 L70**	5000 K	80	120°	3250 lm	100 lm/W
TA0721S02	147 Mid Power LED	60.000 L70**	5000 K	80	120°	4550 lm	100 lm/W
TA0721S03	147 Mid Power LED	60.000 L70**	5000 K	80	120°	4550 lm	100 lm/W
TA1021S02	210 Mid Power LED	60.000 L70**	5000 K	80	120°	6500 lm	100 lm/W
TA1021S03	210 Mid Power LED	60.000 L70**	5000 K	80	120°	6500 lm	100 lm/W

PHOTOMETRIC DIAGRAMS

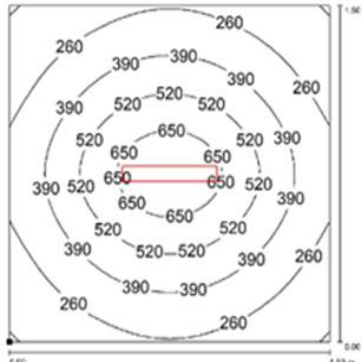
120° Flow beam



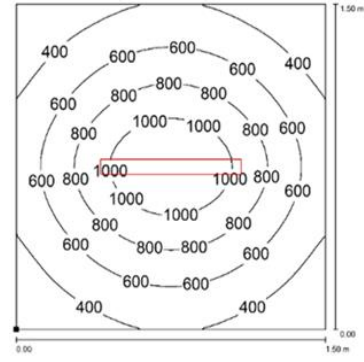
TA0221S02 TA0221S03



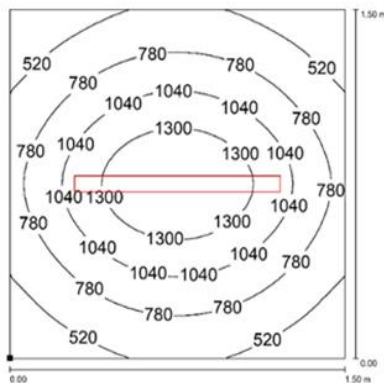
TA0321S02 TA0321S03



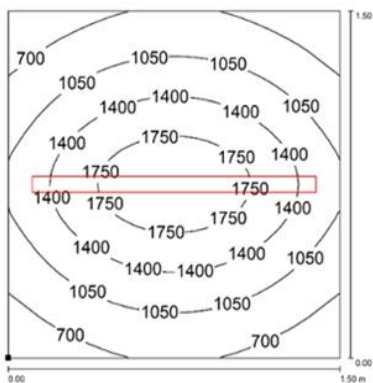
TA0521S02 TA0521S03



TA0721S02 TA0721S03



TA1021S02 TA1021S03



PLUG OPTION M12 Cable Connector

Product pictures

Description

Code product



M12; PIN: 4; female; T Code-Power; Straight for cable Ø 0.32-0.39 (8-10 mm); screw terminal

N13110001040302

MOUNTING OPTIONS

Product pictures

Description

Code product



Robust, versatile and vibration resistant, it is a 90° angle adjustment bracket. Made of stainless steel, it is the perfect solution when you need to adjust the direction of the flow beam in high-vibrating applications.

TAFX02



Sturdy, flexible and vibration resistant, it is a 30° angle adjustment bracket. Made of anodized aluminum, it is the perfect solution when you need to retrofit an obsolete machine tools and machining centers.

TACLIP



Strong magnetic disc made of neodymium. Use along with ALPHA.FX02 brackets when you need to move the light frequently and to different positions. Suitable to use in high-vibrating applications.

B03

ORDER CODES

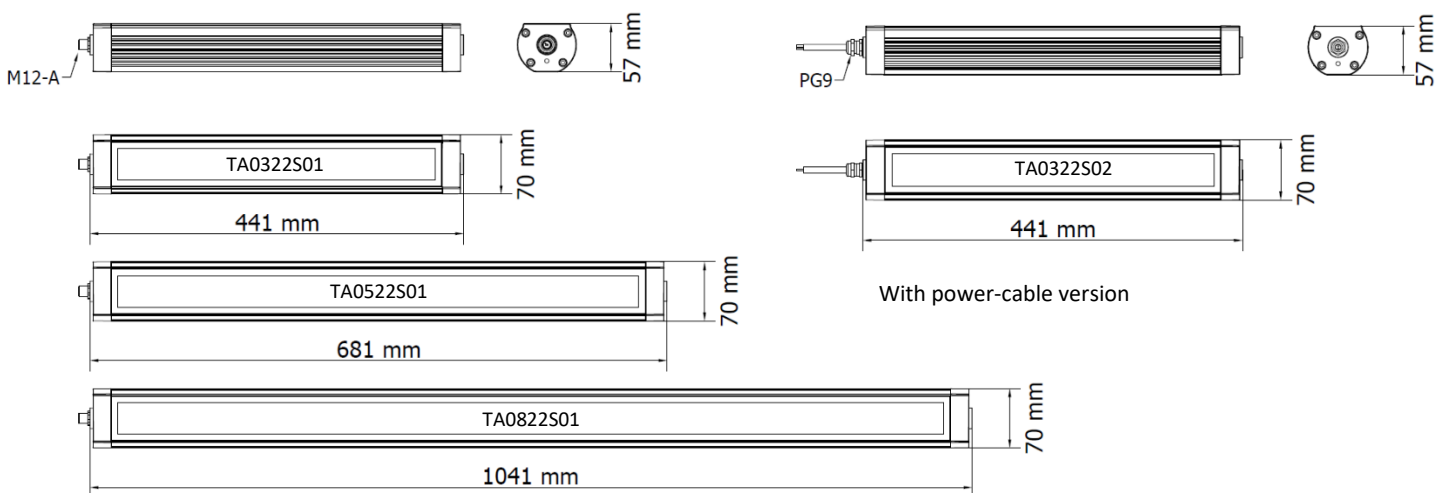
Model	Description
TA0221S02	TRACKALPHA, 12.64"(321 mm), 120°, 13W, 24Vdc, M12-T 4P Male
TA0221S03	TRACKALPHA, 12.64"(321 mm), 120°, 13W, 24Vdc, Cable 10ft (3mt)
TA0321S02	TRACKALPHA, 17.36"(441 mm), 120°, 19.5W, 24Vdc, M12-T 4P Male
TA0321S03	TRACKALPHA, 17.36"(441 mm), 120°, 19.5W, 24Vdc, Cable 10ft (3mt)
TA0521S02	TRACKALPHA, 26.81"(681 mm), 120°, 32.5W, 24Vdc, M12-T 4P Male
TA0521S03	TRACKALPHA, 26.81"(681 mm), 120°, 32.5W, 24Vdc, Cable 10ft (3mt)
TA0721S02	TRACKALPHA, 36.26"(921 mm), 120°, 45.5W, 24Vdc, M12-T 4P Male
TA0721S03	TRACKALPHA, 36.26"(921 mm), 120°, 45.5W, 24Vdc, Cable 10ft (3mt)
TA1021S02	TRACKALPHA, 50.43"(1281 mm), 120°, 65W, 24Vdc, M12-T 4P Male
TA1021S03	TRACKALPHA, 50.43"(1281 mm), 120°, 65W, 24Vdc, Cable 10ft (3mt)
TAFX02	TRACKALPHA, stainless steel side brackets kit 90°
TACLIP	TRACKALPHA, rear mounting clips kit
B03	Magnet Diam 1.9" (48 mm)
N13110001040302	M12; PIN: 4; female; T Code-Power; Straight for cable Ø 0.32-0.39 (8-10 mm); screw terminal



Lighting system for industrial applications, automation, medium and large CNC machines. A Sturdy anodized aluminum casing combined with front tempered glass creates a body impenetrable by coolants, emulsions and shavings. Suitable for wet location it's vibration resistant.

- Casing entirely made of aluminum alloy resistant to Emulsion, coolants, oil.
- Hardened frosted glass resistant to chips and providing uniform illumination
- 3 power sizes from 19,5 to 52W to meet any work-area criteria
- 120° Light beam to provide wide and intense illumination
- LED lifespan: 60,000 hours constantly > (L 70)
- Light color temperature 5000 K -- CRI 80
- 230 Vac via M12 or 10ft. (3m) Cable for more flexibility
- 3 mounting options for a quick and practical installation TAFX02 side steel Brackets, TACLIP rear clamping, B03 magnet
- Approval: CE

DIMENSIONI



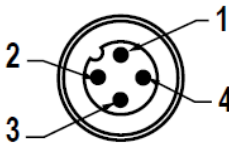
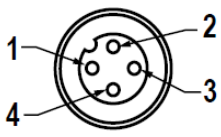
MECHANICAL FEATURES

Model	TA0322S01	TA0322S02	TA0522S01	TA0522S02	TA0822S01	TA0822S02
Casing Material	Anodized extruded aluminum					
Side Enclosers	Painted aluminum					
Surface Treatment	Standard: 10 microns of natural aluminum solution oxidation					
Front Glass	Extra clear tempered 0.20 in (5 mm) thick frosted glass IK06					
Weight	~1,95kg	~2,15kg	~2,75kg	~2,90kg	~4,10kg	4,30kg
Protection Index	IP67					
Impact Resistance	1.00 N m/s					
Operating Temperature	04°F (-20°C) to +113°F (+ 45°C)					
Installation	TAFX02 Stainless-steel side brackets / TACLIP Aluminum rear Clip / Magnet B03					

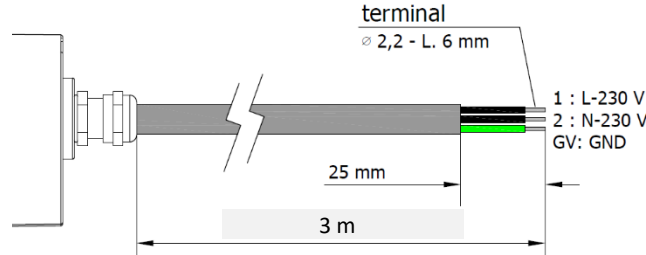
ELECTRICAL FEATURES

Model	TA0322S01	TA0322S02	TA0522S01	TA0522S02	TA0822S01	TA0822S02
Power Input	19.5 W	19.5 W	32,5 W	32,5 W	52 W	52 W
Power Supply	220 ÷ 240 Vac					
Current	0,9 A	0,9 A	1,5 A	1,5 A	2,4 A	2,4 A
Device Power Protection	Full protection against reverse polarity					
Electrical Connection	M12	Cable	M12	Cable	M12	Cable
Insulation Class	Class I					
Efficiency Class	A/A+/A++/A+++ (Integrated LED module) compliant with UE Law No. 874/2012					

CONNECTION* with M12-4P Male A Coding

Male	Female	Pin	Connection
		1	L – 230 Vac
		2	GND
		3	N – 230 Vac
		4	Not Connected

CONNECTION with 3m Cable, Standard length

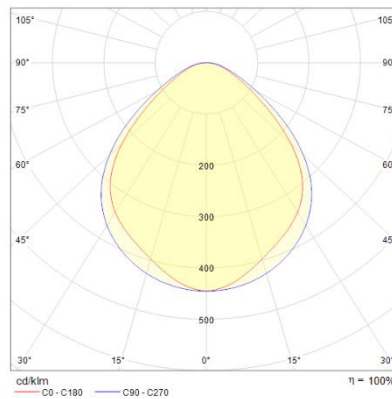
PUR 3G 0,75 mm ² L= 3 m	Conductor	Connection
	1 Black	L – 230 Vac
	2 Black	N – 230 Vac
	Yellow / Green	GND

OPTICAL FEATURES

Model	N° and Type of LEDs	LED Lifespan	Light Color	CRI	Light Beam Angle	Luminous Flux	Efficiency
TA0322S01	63 Mid Power LED	60.000 L70**	5000 K	80	120°	1950 lm	100 lm/W
TA0322S02	63 Mid Power LED	60.000 L70**	5000 K	80	120°	1950 lm	100 lm/W
TA0522S01	105 Mid Power LED	60.000 L70**	5000 K	80	120°	3250 lm	100 lm/W
TA0522S02	105 Mid Power LED	60.000 L70**	5000 K	80	120°	3250 lm	100 lm/W
TA0822S01	168 Mid Power LED	60.000 L70**	5000 K	80	120°	5200 lm	100 lm/W
TA0822S02	168 Mid Power LED	60.000 L70**	5000 K	80	120°	5200 lm	100 lm/W

PHOTOMETRIC DIAGRAMS

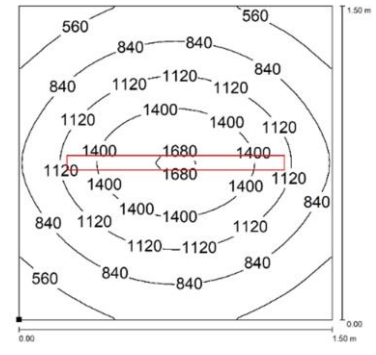
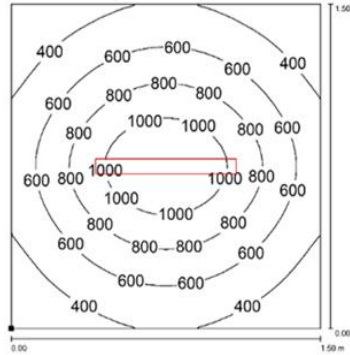
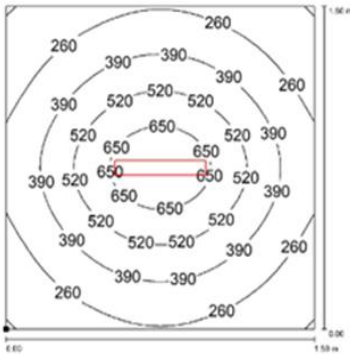
120° Flow beam



TA0322S01 TA0322S02

TA0522S01 TA0522S02

TA0822S01 TA0822S02



Distance graphic: 1m

PLUG OPTION M12 Cable Connector

Product pictures

Description




Code product



M12 4P (F) COD.A with cable L.5m

M12AFCSUL

MOUNTING OPTIONS

Product pictures	Description	Code product
	Robust, versatile and vibration resistant, it is a 90° angle adjustment bracket. Made stainless steel, it is the perfect solution when you need to adjust the direction of the flow beam in high-vibrating applications.	TAFX02
	Sturdy, flexible and vibration resistant, it is a 30° angle adjustment bracket. Made of anodized aluminum, it is the perfect solution when you need to retrofit an obsolete machine tools and machining centers.	TACLIP
	Strong magnetic disc made of neodymium. Use along with ALPHA.FX02 brackets when you need to move the light frequently and to different positions. Suitable to use in high-vibrating applications.	B03

ORDER CODES

Model	Description
TA0322S01	TRACKALPHA, 17.36"(441 mm), 120°, 19.5W, 230Vac, M12-A 4P Male
TA0322S02	TRACKALPHA, 17.36"(441 mm), 120°, 19.5W, 230Vac, Cable 10ft (3mt)
TA0522S01	TRACKALPHA, 26.81"(681 mm), 120°, 32.5W, 230Vac, M12-A 4P Male
TA0522S02	TRACKALPHA, 26.81"(681 mm), 120°, 32.5W, 230Vac, Cable 10ft (3mt)
TA0822S01	TRACKALPHA, 40.98"(1041 mm), 120°, 45.5W, 230Vac, M12-A 4P Male
TA0822S02	TRACKALPHA, 40.98"(1041 mm), 120°, 45.5W, 230Vac, Cable 10ft (3mt)
TAFX02	TRACKALPHA, stainless steel side brackets kit 90°
TACLIP	TRACKALPHA, rear mounting clips kit
B03	Magnet Diam 1.9" (48 mm)
M12AFCSUL	PRE-ASSEMBLED M12 4Pin, FEMALE, A Coding, CABLE 5mt, UL