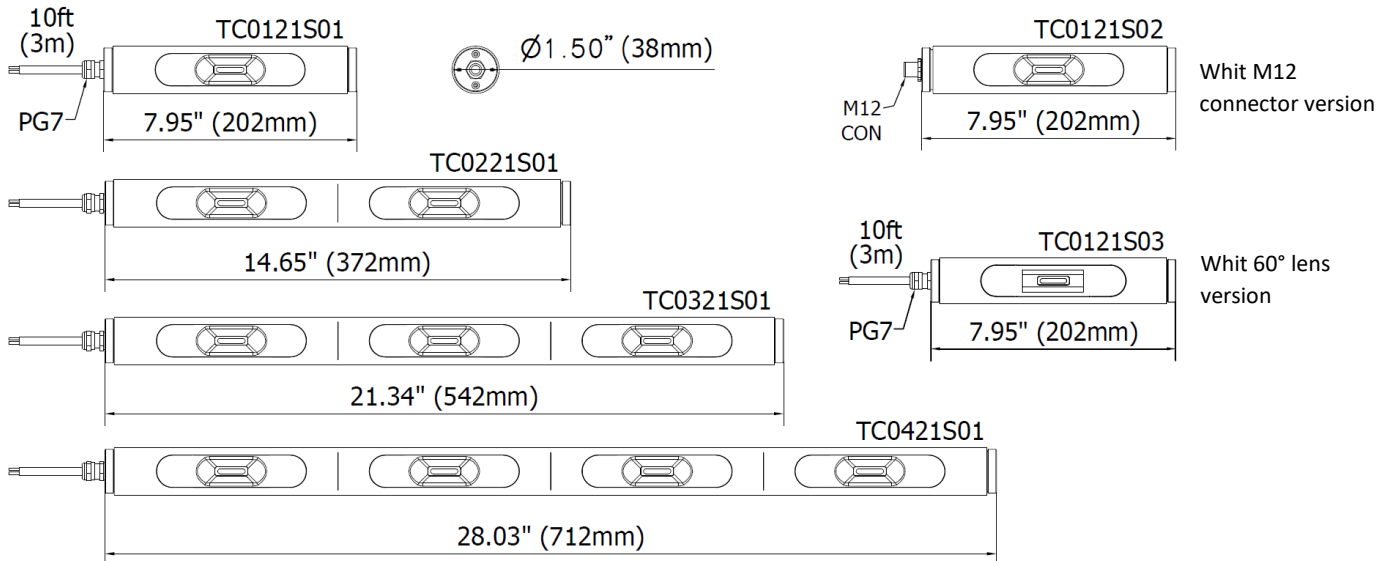




The T-CITY waterproof lighting system is a perfect combination of design and technology. It is equipped with a multi-chip LED light source that can generate a powerful luminous flux and is enclosed in a completely waterproof structure featuring a borosilicate glass cover. Anodized aluminum side locks, complemented by Viton O-rings, ensure that the lamp remains perfectly sealed against any liquids. The mounting brackets allow to easily adjust the flow beam direction up to 90°.

- Waterproof LED lighting recommended for CNC, EDM and transfer machining centers
- Corrosion and vibration resistant
- High degree of protection IP68
- Resistant to oils, coolants, liquids and dust
- IK06 metal chips impact
- Reverse polarity protection
- 50% energy savings and constant flow beam for 60.000 hours
- Non photobiological risk according to EN 62471
- 24 Vdc via M12 or 10ft. (3m) Cable for more flexibility
- 4 model sizes from 6W to 24 W by LED Multichip

DIMENSIONS



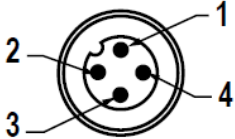
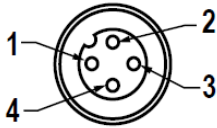
MECHANICAL FEATURES

Model	TC0121 S01	TC0121 S02	TC0121 S03	TC0221 S01	TC0221 S02	TC0221 S03	TC0321 S01	TC0321 S02	TC0321 S03	TC0421 S01	TC0421 S02	TC0421 S03
Casing Material	Anodized Aluminum											
Side Enclosers	Anodized Aluminum											
Surface Treatment	Standard: 10 microns of natural aluminum solution oxidation											
Front Glass	Borosilicate glass 0.12 in (3 mm) thick											
Weight	1.43lb 0.65 Kg	1.10lb 0.50 Kg	1.43b 0.65 Kg	2.09 lb. 0.95 kg	1.76 lb. 0.80 kg	2.09 lb. 0.95 kg	2.87 lb. 1.30 kg	2.54 lb. 1.15 kg	2.87 lb. 1.30 kg	4.19 lb. 1.90 kg	3.86 lb. 1.75 kg	4.19 lb. 1.90 kg
Protection Index	IP68 Compatible with NEMA Type 12											
Impact Resistance	1.00 N m/s											
Operating Temperature	-04°F (-20°C) to +113°F (+ 45°C)											
Installation	TFX01 Stainless-steel side brackets / Magnet B03											

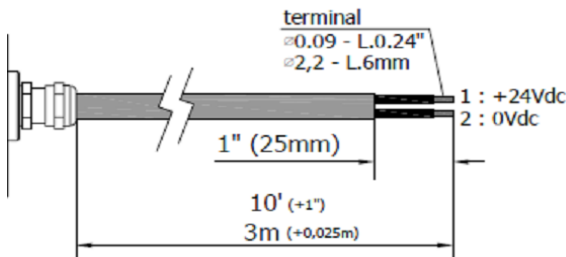
ELECTRICAL FEATURES

Model	TC0121 S01	TC0121 S02	TC0121 S03	TC0221 S01	TC0221 S02	TC0221 S03	TC0321 S01	TC0321 S02	TC0321 S03	TC0421 S01	TC0421 S02	TC0421 S03
Power Input	6 W			12 W			18 W			24 W		
Power Supply	22-28 Vdc											
Current	0.3 A @ 24 Vdc			0.55 A @ 24 Vdc			0.85 A @ 24 Vdc			1.1 A @ 24 Vdc		
Device Power Protection	Full protection against reverse polarity											
Electrical Connection	Cable	M12	Cable	Cable	M12	Cable	Cable	M12	Cable	Cable	M12	Cable
Insulation Class	Class III (SELV)											
Efficiency Class	A/A+/A++/A+++ (Integrated LED module) compliant with UE Law No. 874/2012											

CONNECTION* with M12-4P Male A Coding

Male	Female	Pin	Connection
		1	+24 Vdc
		2	Not Connected
		3	0 Vdc
		4	Not Connected

CONNECTION* with 10 ft. (3m) Cable, Standard length

PVC 2x 0.17 in ² (0.75 mm ²) L= 10 ft. (3 m)	Conductor	Connection
	1 Black	+24 Vdc
	2 Black	0

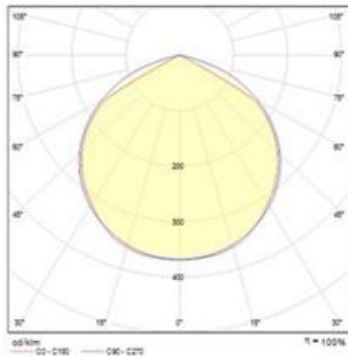
OPTICAL FEATURES

Model	N° and Type of LEDs	LED Lifespan	Light Color	CRI	Light Beam Angle	Luminous Flux	Efficiency
TC0121S01	1 LED Multi Chip	60 000 h L70 **	5000 K	65	120°	720 lm	120 lm/W
TC0121S02	1 LED Multi Chip	60 000 h L70 **	5000 K	65	120°	720 lm	120 lm/W
TC0121S03	1 LED Multi Chip	60 000 h L70 **	5000 K	65	60°	790 lm	132 lm/W
TC0221S01	2 LED Multi Chip	60 000 h L70 **	5000 K	65	120°	1440 lm	120 lm/W
TC0221S02	2 LED Multi Chip	60 000 h L70 **	5000 K	65	120°	1440 lm	120 lm/W
TC0221S03	2 LED Multi Chip	60 000 h L70 **	5000 K	65	60°	1580 lm	132 lm/W
TC0321S01	3 LED Multi Chip	60 000 h L70 **	5000 K	65	120°	2160 lm	120 lm/W
TC0321S02	3 LED Multi Chip	60 000 h L70 **	5000 K	65	120°	2160 lm	120 lm/W
TC0321S03	3 LED Multi Chip	60 000 h L70 **	5000 K	65	60°	2370 lm	132 lm/W
TC0421S01	4 LED Multi Chip	60 000 h L70 **	5000 K	65	120°	2880 lm	120 lm/W
TC0421S02	4 LED Multi Chip	60 000 h L70 **	5000 K	65	120°	2880 lm	120 lm/W
TC0421S03	4 LED Multi Chip	60 000 h L70 **	5000 K	65	60°	3160 lm	132 lm/W

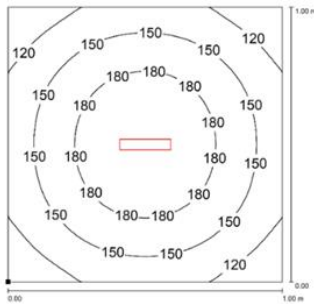
** Flow beam reduced by less than 30% after 60,000 hours

PHOTOMETRIC DIAGRAMS

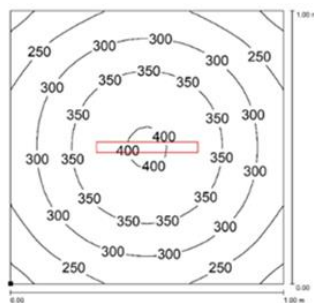
120° LENS



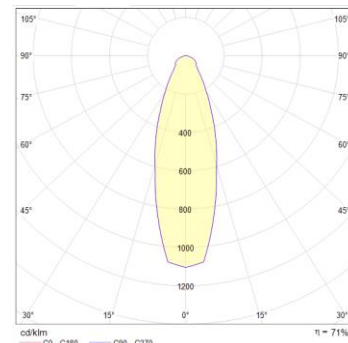
TC0121S01
TC0121S02



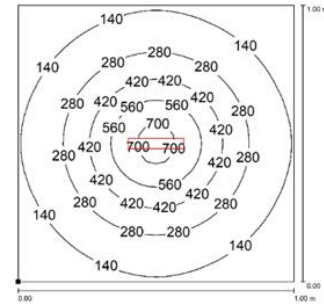
TC0221S01
TC0221S02



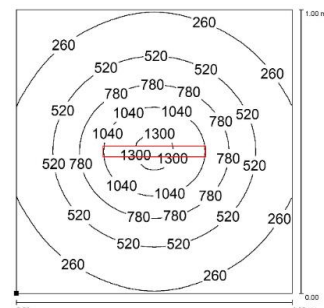
60° LENS



TC0121S03



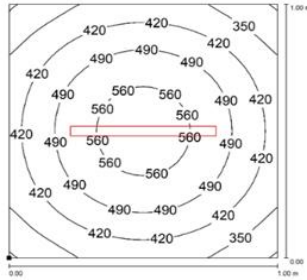
TC0221S03



PHOTOMETRIC DIAGRAMS

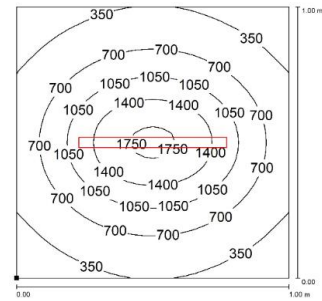
120° LENS

TC0321S01
TC0321S02

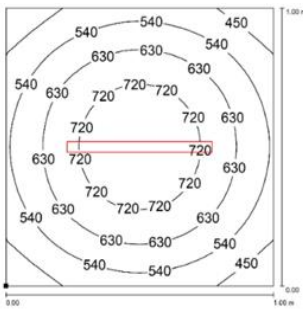


60° LENS

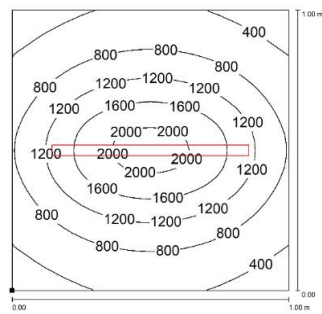
TC0321S03



TC0421S01
TC0421S02



TC0421S03



Distance graphic: 1m

MOUNTING OPTIONS

Product pictures

Description

Code product



Robust, versatile and vibration resistant, it is a 60° angle adjustment bracket. Made of chrome-plated stainless steel, it is the perfect solution when you need to adjust the direction of the flow beam in high-vibrating applications.

TFX01

Product code – set is composed by two brackets with M3 screws and steel handle washers.



Strong magnetic disc made of neodymium and high grip. Use along with TFX01 brackets when you need to move the light frequently and to different positions. Suitable to use in high-vibrating applications

B03

ORDER CODES

Code	Description
TC0121S01	TCITY, 7.95"(202mm) x Ø1.50"(38mm), 120°, 6W, 24VDC, Cable 10ft(3m)
TC0121S02	TCITY, 7.95"(202mm) x Ø1.50"(38mm), 120°, 6W, 24VDC, M12-A 4P Male
TC0121S03	TCITY, 7.95"(202mm) x Ø1.50"(38mm), 60°, 6W, 24VDC, Cable 10ft(3m)
TC0221S01	TCITY, 14.65"(372mm) x Ø1.50"(38mm), 120°, 12W, 24VDC, Cable 10ft(3m)
TC0221S02	TCITY, 14.65"(372mm) x Ø1.50"(38mm), 120°, 12W, 24VDC, M12-A 4P Male
TC0221S03	TCITY, 14.65"(372mm) x Ø1.50"(38mm), 60°, 12W, 24VDC, Cable 10ft(3m)
TC0321S01	TCITY, 21.34"(542mm) x Ø1.50"(38mm), 120°, 18W, 24VDC, Cable 10ft(3m)
TC0321S02	TCITY, 21.34"(542mm) x Ø1.50"(38mm), 120°, 18W, 24VDC, M12-A 4P Male
TC0321S03	TCITY, 21.34"(542mm) x Ø1.50"(38mm), 60°, 18W, 24VDC, Cable 10ft(3m)
TC0421S01	TCITY, 28.03"(712mm) x Ø1.50"(38mm), 120°, 24W, 24VDC, Cable 10ft(3m)
TC0421S02	TCITY, 28.03"(712mm) x Ø1.50"(38mm), 120°, 24W, 24VDC, M12-A 4P Male
TC0421S03	TCITY, 28.03"(712mm) x Ø1.50"(38mm), 60°, 24W, 24VDC, Cable 10ft(3m)
TFX01	TCITY-TELD, stainless steel side brackets kit
B03	Magnet Diam 1.9" (48 mm)