



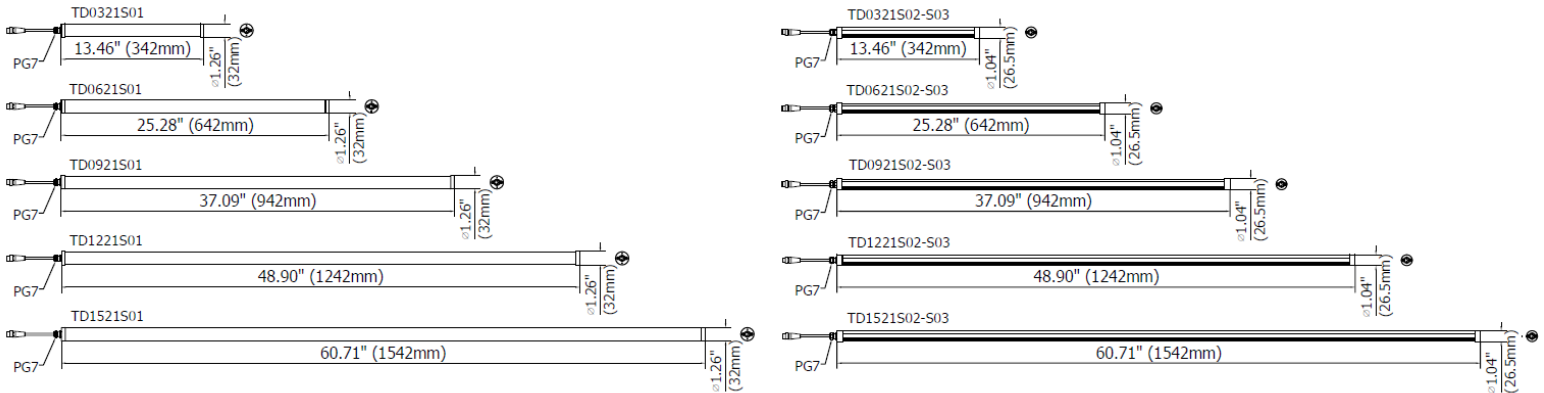
Designed for use in different work environments, A compact construction combining state-of-the art LED technology with a sturdy, anodized aluminum casing highly resistant to liquids and machine tool debris. Particularly suitable in any workplace where the space is very limited, but at the same time requires high-performance and intense lighting.

TEIDE is a series of compact, low profile LED lighting designed for both interior and industrial applications such as switchboard illumination and beverage machines. Highly efficient flow beam is delivered using the latest LED Technology. Side fastening clips allow an adjustment of the direction of the light flow up to 70°. Five different lengths offer installation flexibility for a wide variety of uses.

The compact size allows for easy integration into existing systems, while providing exceptional energy efficiency and low voltage safety.

- Structure made of anodized aluminum
- 0.94 inch (24 mm) wide or 1.18 inch (30 mm) wide
- Cover PC Frosted Opaque or Cover in PMMA, transparent Acrylic
- 5 power sizes from 5 to 50W to meet any work-area criteria
- 120° Light beam to provide wide and intense illumination
- LED lifespan: 60,000 hours constantly > (L 70)
- 24Vdc via M12-connector
- Light color temperature 5000 K -- CRI 80

DIMENSIONS



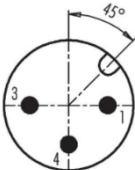
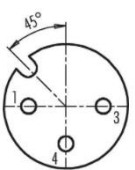
MECHANICAL FEATURES

Model	TD0321 S01	TD0321 S02	TD0321 S03	TD0621 S01	TD0621 S02	TD0621 S03	TD0921 S01	TD0921 S02	TD0921 S03	TD1221 S01	TD1221 S02	TD1221 S03	TD1521 S01	TD1521 S02	TD1521 S03
Casing Material	Anodized extruded aluminum														
Side Enclosers	Stainless steel AISI 304														
Surface Treatment	Standard: 10 microns of natural aluminum solution oxidation														
Front Glass	PMMA Transp Acrylic	PC frosted opaque	PC frosted opaque	PMMA Transp Acrylic	PC frosted opaque	PC frosted opaque	PMMA Transp Acrylic	PC frosted opaque	PC frosted opaque	PMMA Transp Acrylic	PC frosted opaque	PC frosted opaque	PMMA Transp Acrylic	PC frosted opaque	PC frosted opaque
Weight	0.95 lb (0.45kg)	0.77 lb (0.35kg)	0.77 lb (0.35kg)	1.43 lb (0.65kg)	1,10 lb (0.50kg)	1,10 lb (0.50kg)	1.76 lb (0.80kg)	1.54 lb (0,7kg)	1.54 lb (0,7kg)	2.40 lb (1,10kg)	2.20 lb (1.00kg)	2.20 lb (1.00kg)	3.31 lb (1.50kg)	2.87 lb (1.30kg)	2.87 lb (1.30kg)
Protection Index	IP67	IP54	IP54	IP67	IP54	IP54	IP67	IP54	IP54	IP67	IP54	IP54	IP67	IP54	IP54
Impact Resistance	1.00 N m/s														
Operating Temperature	04°F (-20°C) to +113°F (+ 45°C)														
Installation	TDFX01 / CLIP24 / Magnet B05														

ELECTRICAL FEATURES

Model	TD0321 S01	TD0321 S02	TD0321 S03	TD0621 S01	TD0621 S02	TD0621 S03	TD0921 S01	TD0921 S02	TD0921 S03	TD1221 S01	TD1221 S02	TD1221 S03	TD1521 S01	TD1521 S02	TD1521 S03
Power Input	10 W	10 W	5 W	20 W	20 W	10 W	30 W	30 W	15 W	40 W	40 W	20 W	50 W	50 W	25 W
Power Supply	22-26 Vdc														
Current	0,45 A	0,45 A	0,25 A	0,90 A	0,90 A	0,50 A	1.35 A	1.35 A	0,75 A	1,80 A	1,80 A	1,00 A	2,25 A	2,25 A	1,25 A
Electrical Connection	M12 CONN														
Insulation Class	Class III (SELV)														
Efficiency Class	A/A+/A++/A+++ (Integrated LED module) compliant with UE Law No. 874/2012														

CONNECTION* with M12-3P Male A Coding

Male	Female	Pin	Connection
		1	+24 Vdc
		3	0 Vdc
		4	NOT CONNECTED

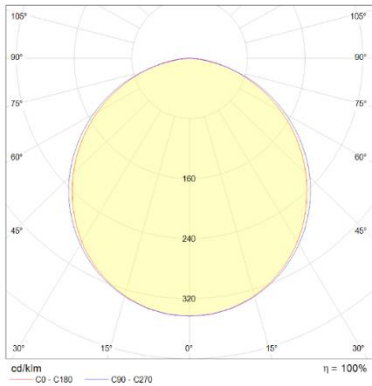
OPTICAL FEATURES

Model	N° and Type of LEDs	LED Lifespan	Light Color	CRI	Light Beam Angle	Luminous Flux	Efficiency
TD0321S01	21 Mid Power LED	60 000 h L70 **	5000 K	80	120°	1200 lm	120 lm/W
TD0321S02	21 Mid Power LED	60 000 h L70 **	5000 K	80	120°	800 lm	80 lm/W
TD0321S03	21 Mid Power LED	60 000 h L70 **	5000 K	80	120°	400 lm	80 lm/W
TD0621S01	42 Mid Power LED	60 000 h L70 **	5000 K	80	120°	2400 lm	120 lm/W
TD0621S02	42 Mid Power LED	60 000 h L70 **	5000 K	80	120°	1600 lm	80 lm/W
TD0621S03	42 Mid Power LED	60 000 h L70 **	5000 K	80	120°	800 lm	80 lm/W
TD0921S01	63 Mid Power LED	60 000 h L70 **	5000 K	80	120°	3600 lm	120 lm/W
TD0921S02	63 Mid Power LED	60 000 h L70 **	5000 K	80	120°	2400 lm	80 lm/W
TD0921S03	63 Mid Power LED	60 000 h L70 **	5000 K	80	120°	1200 lm	80 lm/W
TD1221S01	84 Mid Power LED	60 000 h L70 **	5000 K	80	120°	4800 lm	120 lm/W
TD1221S02	84 Mid Power LED	60 000 h L70 **	5000 K	80	120°	3200 lm	80 lm/W
TD1221S03	84 Mid Power LED	60 000 h L70 **	5000 K	80	120°	1600 lm	80 lm/W
TD1521S01	105 Mid Power LED	60 000 h L70 **	5000 K	80	120°	6000 lm	120 lm/W
TD1521S02	105 Mid Power LED	60 000 h L70 **	5000 K	80	120°	4000 lm	80 lm/W
TD1521S03	105 Mid Power LED	60 000 h L70 **	5000 K	80	120°	2000 lm	80 lm/W

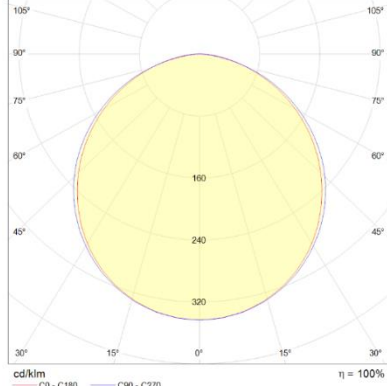
** Flow beam reduced by less than 30% after 60,000 hours

PHOTOMETRIC DIAGRAMS

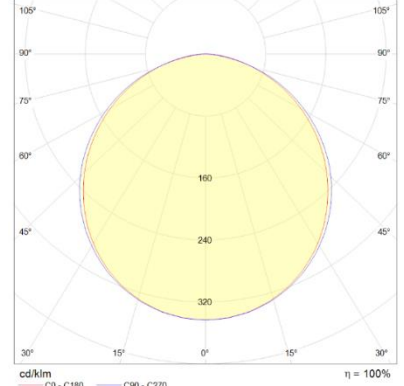
TDXX21S01 Flow beam



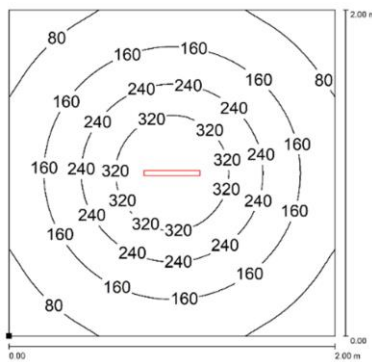
TDXX21S02 Flow beam



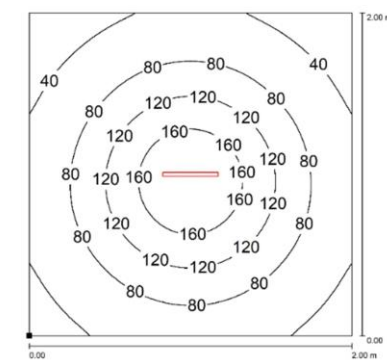
TDXX21S03 Flow beam



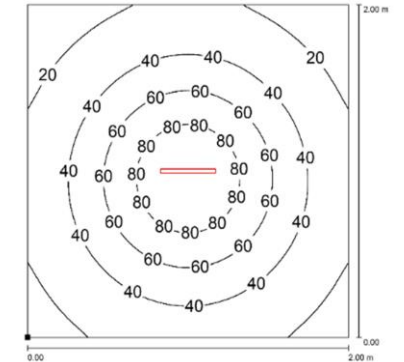
TD0321S01



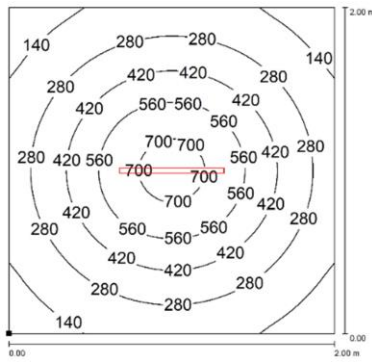
TD0321S02



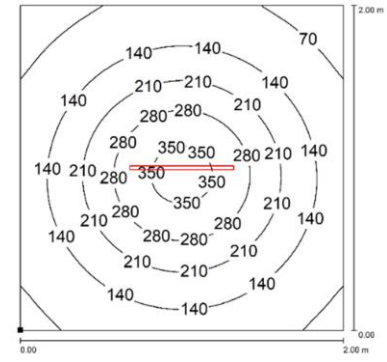
TD0321S03



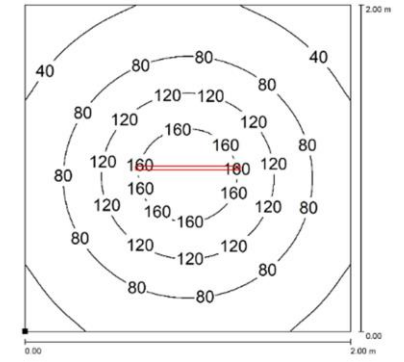
TD0621S01



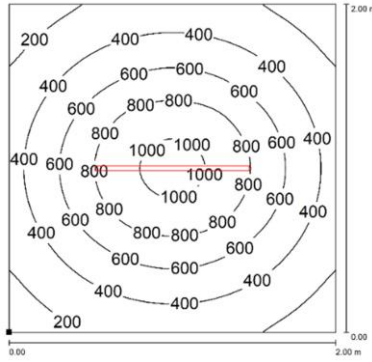
TD0621S02



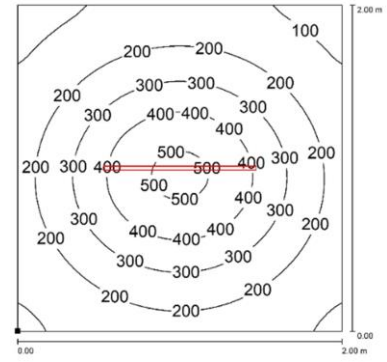
TD0621S03



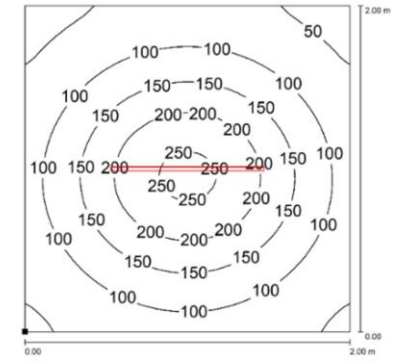
TD0921S01

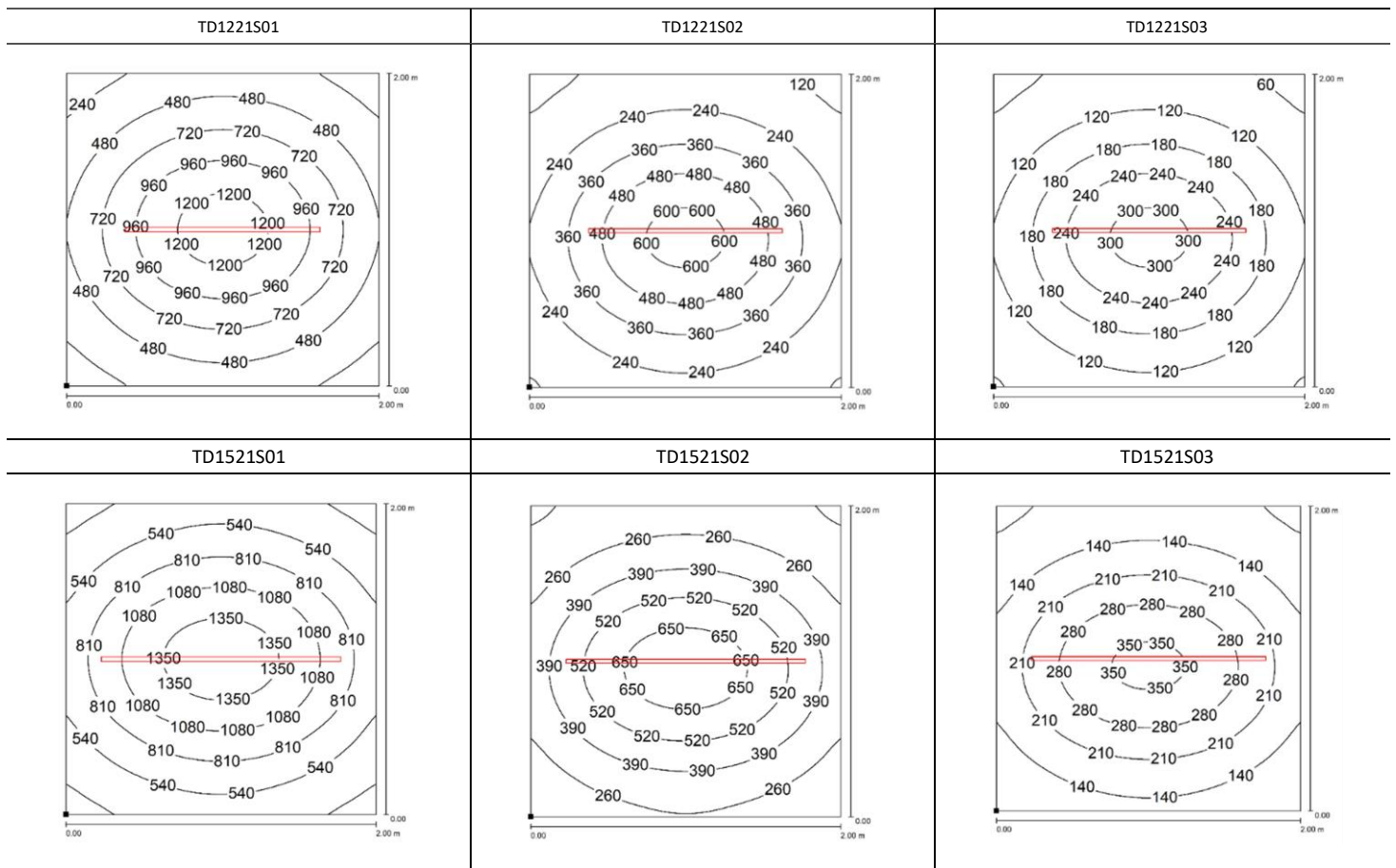


TD0921S02



TD0921S03





Distance graphic: 1m

PLUG OPTION M12 Cable Connector

Product pictures	Description	Code product
	Pre-assembled M12 4Pin, female, A Coding, CABLE 5mt, UL	M12AFCS

MOUNTING OPTIONS

Product pictures	Description	Code product
	<p>Robust, versatile and vibration resistant, it is a 70° angle adjustment bracket. Made of stainless steel, it is the perfect solution when you need to adjust the direction of the flow beam in high-vibrating applications.</p> <p><i>Product code—set is composed by two brackets with M3 screws and steel handle washers.</i></p>	TDFX01
	<p>Chrome-plated steel clip kit for diameter 0.94-1.18 in (24-30 mm). allow you to clip the lamp and adjust the direction of the flow beam.</p>	CLIP24
	<p>Strong magnetic disc made of neodymium and high grip. Use along with TDFX01 brackets when you need to move the light frequently and to different positions. Suitable to use in high-vibrating applications.</p>	B05

ORDER CODES

Model	Description
TD0321S01	TEIDE Power S, 13.46"(342mm), Ø1.26"(32mm), 120°, 10W, 24vdc, Cable 10ft(3m) with M12-A 3P Male, PMMA. Tube
TD0321S02	TEIDE Power Q, 13.46"(342mm), Ø0.95"(24mm), 120°, 10W, 24vdc, Cable 10ft(3m) with M12-A 3P Male, Opal Polycarbonate
TD0321S03	TEIDE Eco, 13.46"(342mm), Ø0.95"(24mm), 120°, 5W, 24vdc, Cable 10ft(3m) with M12-A 3P Male, Opal Polycarbonate
TD0621S01	TEIDE Power S, 25.28"(642mm), Ø1.26"(32mm), 120°, 20W, 24vdc, Cable 10ft(3m) with M12-A 3P Male, PMMA. Tube
TD0621S02	TEIDE Power Q, 25.28"(642mm), Ø0.95"(24mm), 120°, 20W, 24vdc, Cable 10ft(3m) with M12-A 3P Male, Opal Polycarbonate
TD0621S03	TEIDE Eco, 25.28"(642mm), Ø0.95"(24mm), 120°, 10W, 24vdc, Cable 10ft(3m) with M12-A 3P Male, Opal Polycarbonate
TD0921S01	TEIDE Power S, 37.08"(942mm), Ø1.26"(32mm), 120°, 30W, 24vdc, Cable 10ft(3m) with M12-A 3P Male, PMMA. Tube
TD0921S02	TEIDE Power Q, 37.08"(942mm), Ø0.95"(24mm), 120°, 30W, 24vdc, Cable 10ft(3m) with M12-A 3P Male, Opal Polycarbonate
TD0921S03	TEIDE Eco, 37.08"(942mm), Ø0.95"(24mm), 120°, 15W, 24vdc, Cable 10ft(3m) with M12-A 3P Male, Opal Polycarbonate
TD1221S01	TEIDE Power S, 48.90"(1242mm), Ø1.26"(32mm), 120°, 40W, 24vdc, Cable 10ft(3m) with M12-A 3P Male, PMMA. Tube
TD1221S02	TEIDE Power Q, 48.90"(1242mm), Ø0.95"(24mm), 120°, 40W, 24vdc, Cable 10ft(3m) with M12-A 3P Male, Opal Polycarbonate
TD1221S03	TEIDE Eco, 48.90"(1242mm), Ø0.95"(24mm), 120°, 20W, 24vdc, Cable 10ft(3m) with M12-A 3P Male, Opal Polycarbonate
TD1521S01	TEIDE Power S, 60.71"(1542mm), Ø1.26"(32mm), 120°, 50W, 24vdc, Cable 10ft(3m) with M12-A 3P Male, PMMA. Tube
TD1521S02	TEIDE Power Q, 60.71"(1542mm), Ø0.95"(24mm), 120°, 50W, 24vdc, Cable 10ft(3m) with M12-A 3P Male, Opal Polycarbonate
TD1521S03	TEIDE Eco, 60.71"(1542mm), Ø0.95"(24mm), 120°, 25W, 24vdc, Cable 10ft(3m) with M12-A 3P Male, Opal Polycarbonate
TDFX01	TEIDE POWER, kit made of 2 side metal platesfor
CLIP24	TEIDE, chrome-plated steel clip kit, Ø24mm
B05	MAGNETIC BASE WITH SCREW M5 Ø30X9mm
M12AFCS	Pre-assembled M12 4Pin, female, A Coding, CABLE 5mt, UL